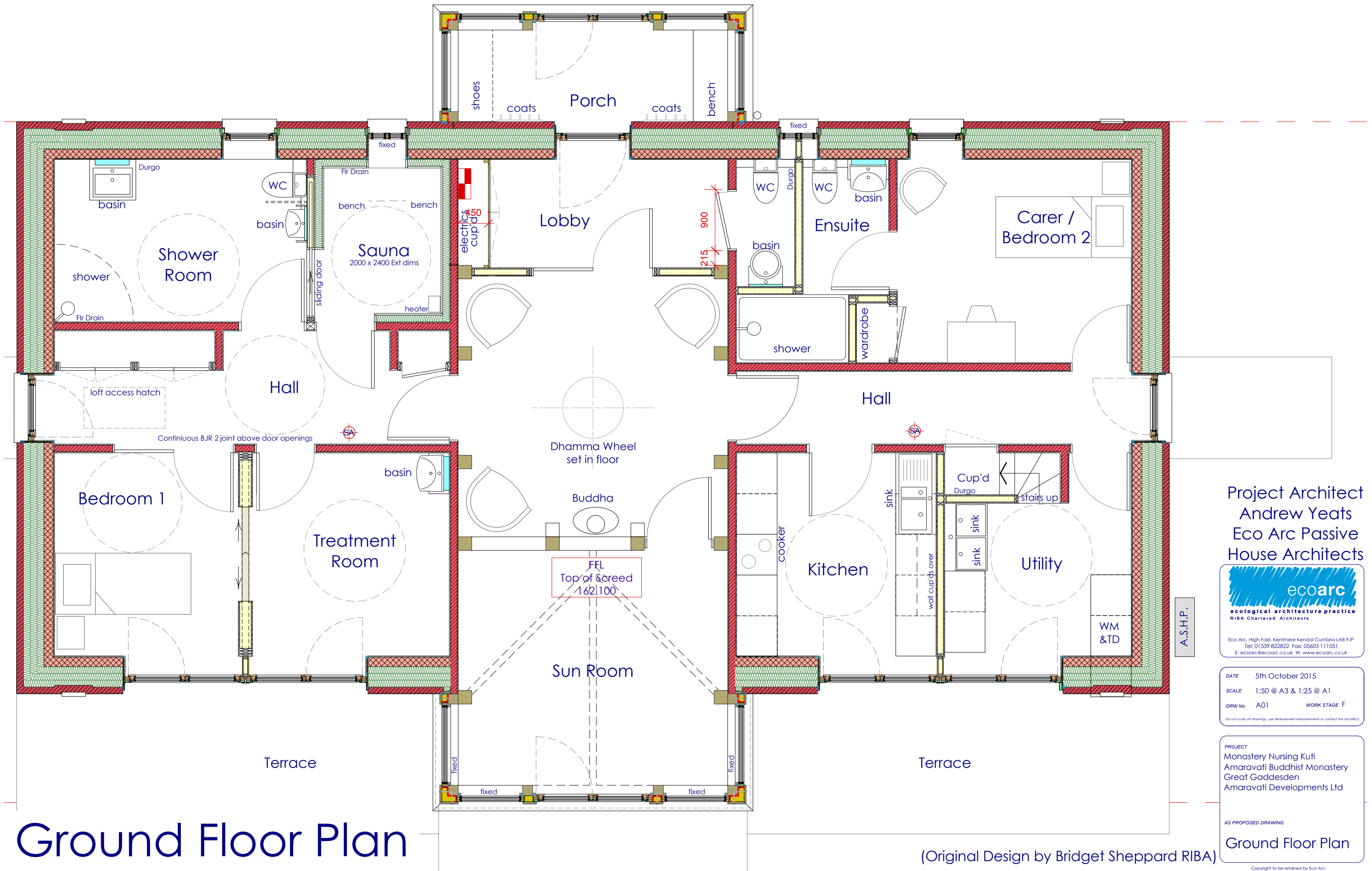


Monastery Nursing Kuti at Amaravati Buddhist Monastery for Amaravati Developments Ltd



Ground Floor Plan

(Original Design by Bridget Sheppard RIBA)

Project Architect
Andrew Yeats
Eco Arc Passive
House Architects

ecoarc
ecological architecture practice
RIBA Chartered Architects

Eco Arc, High Fold, Kentmere Kendal Cumbria LA8 9JP
Tel: 01539 822822 Fax: 05603 111051
E: ecoarc@ecoarc.co.uk W: www.ecoarc.co.uk

DATE 5th October 2015
SCALE 1:50 @ A3 & 1:25 @ A1
DRW No A01 WORK STAGE F

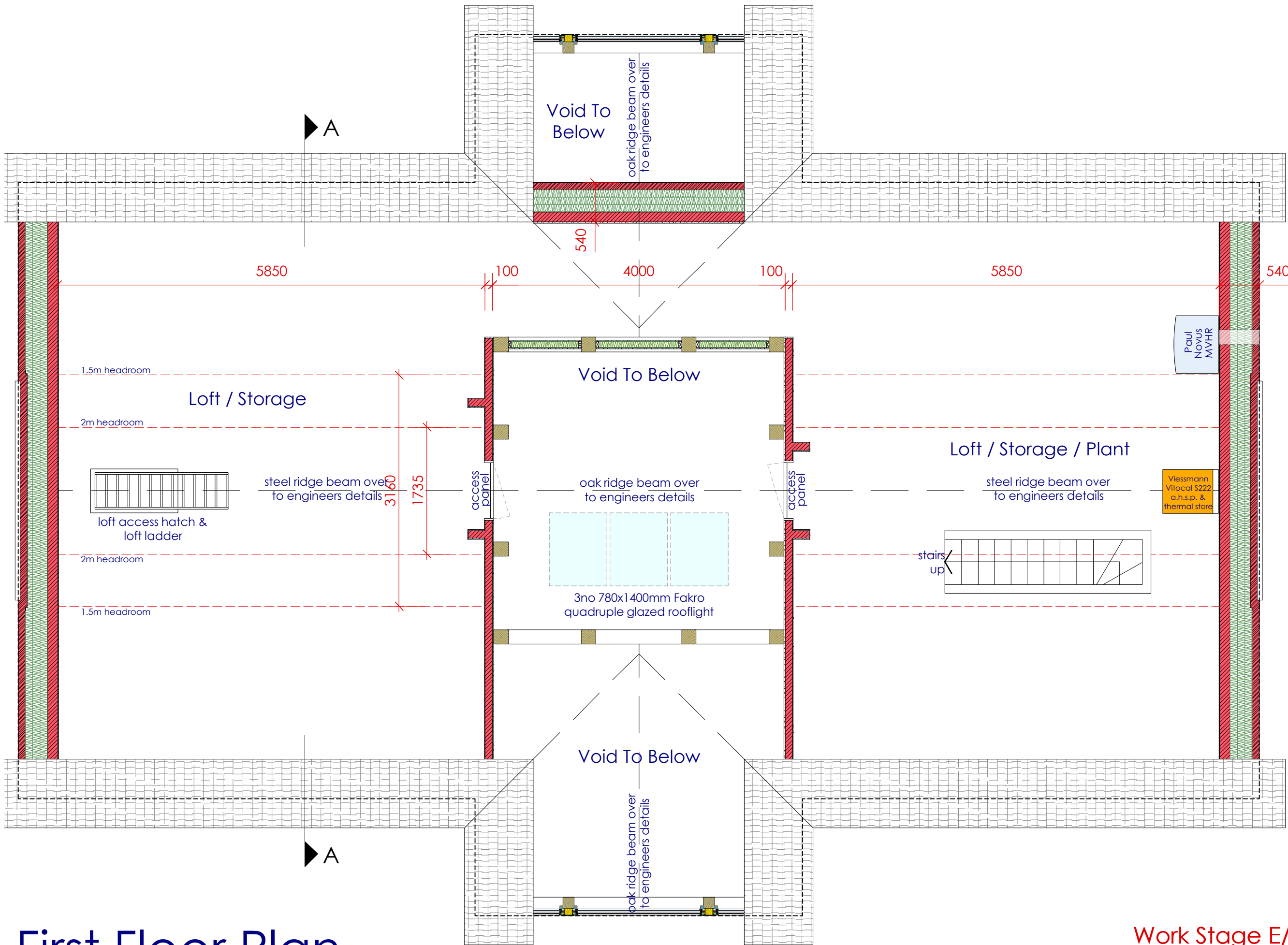
Do not scale off drawings, use dimensioned measurements or contact the architect.

PROJECT
Monastery Nursing Kuti
Amaravati Buddhist Monastery
Great Gaddesden
Amaravati Developments Ltd

AS PROPOSED DRAWING
Ground Floor Plan

Copyright to be retained by Eco Arc.

Monastery Nursing Kuti at Amaravati Buddhist Monastery for Amaravati Developments Ltd



Note!
Plant indicative only. Final services plans & specifications to Alan Clarke M&E details



DATE 15th May 2015
SCALE 1:50 @ A3 & 1:25 @ A1
DRW No A02 WORK STAGE E/F
Do not scale off drawings, use dimensioned measurements or contact the architect.

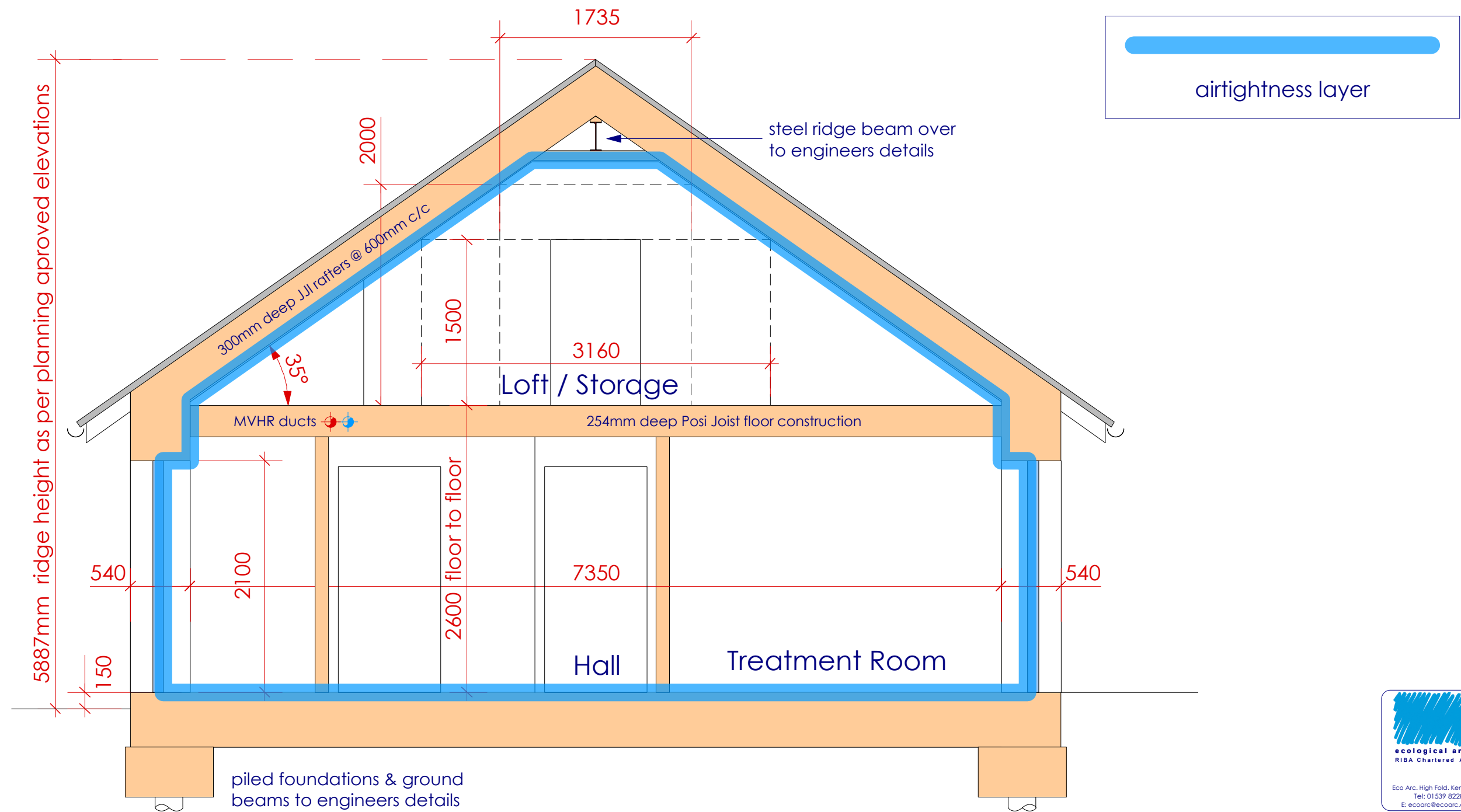
PROJECT
Monastery Nursing Kuti
Amaravati Buddhist Monastery
Great Gaddesden
Amaravati Developments Ltd
(Original Design by Bridget Sheppard Architect)

AS PROPOSED DRAWING
First Floor Plan

First Floor Plan

Work Stage E/F
Building Regulations Drawing

Monastery Nursing Kuti at Amaravati Buddhist Monastery for Amaravati Developments Ltd



Schematic Section A-A

Work Stage E/F
Building Regulations Drawing

ecoarc
ecological architecture practice
RIBA Chartered Architects

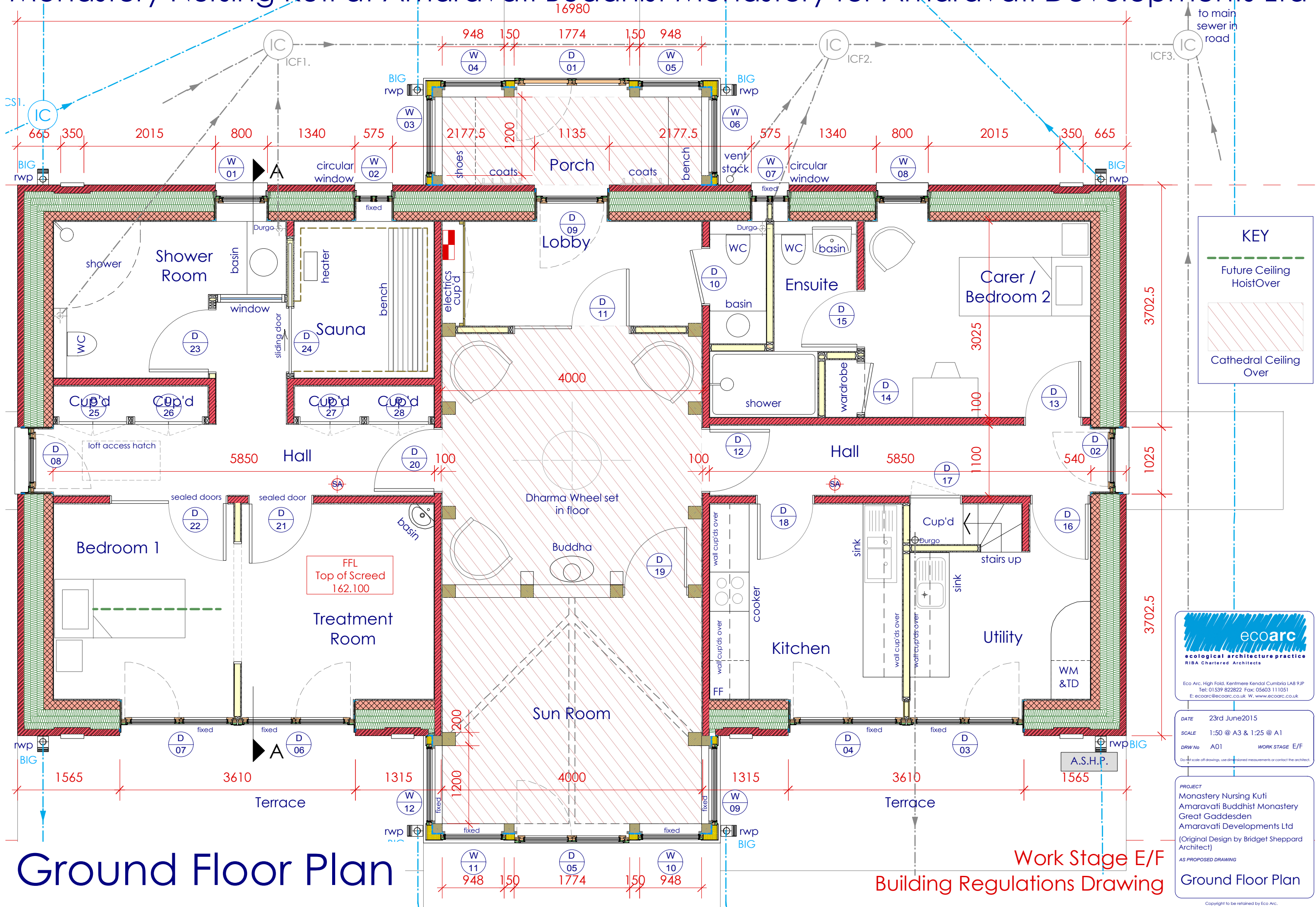
Eco Arc, High Fold, Kentmere Kendal Cumbria LA8 9JP
Tel: 01539 822822 Fax: 05603 111051
E: ecoarc@ecoarc.co.uk W: www.ecoarc.co.uk

DATE 4th June 2015
SCALE 1:40 @ A3 & 1:20 @ A1
DRW No A07 WORK STAGE E/F
Do not scale off drawings, use dimensioned measurements or contact the architect.

PROJECT
Monastery Nursing Kuti
Amaravati Buddhist Monastery
Great Gaddesden
Amaravati Developments Ltd
(Original Design by Bridget Sheppard Architect)
AS PROPOSED DRAWING
Schematic Section A-A

Copyright to be retained by Eco Arc.

Monastery Nursing Kuti at Amaravati Buddhist Monastery for Amaravati Developments Ltd



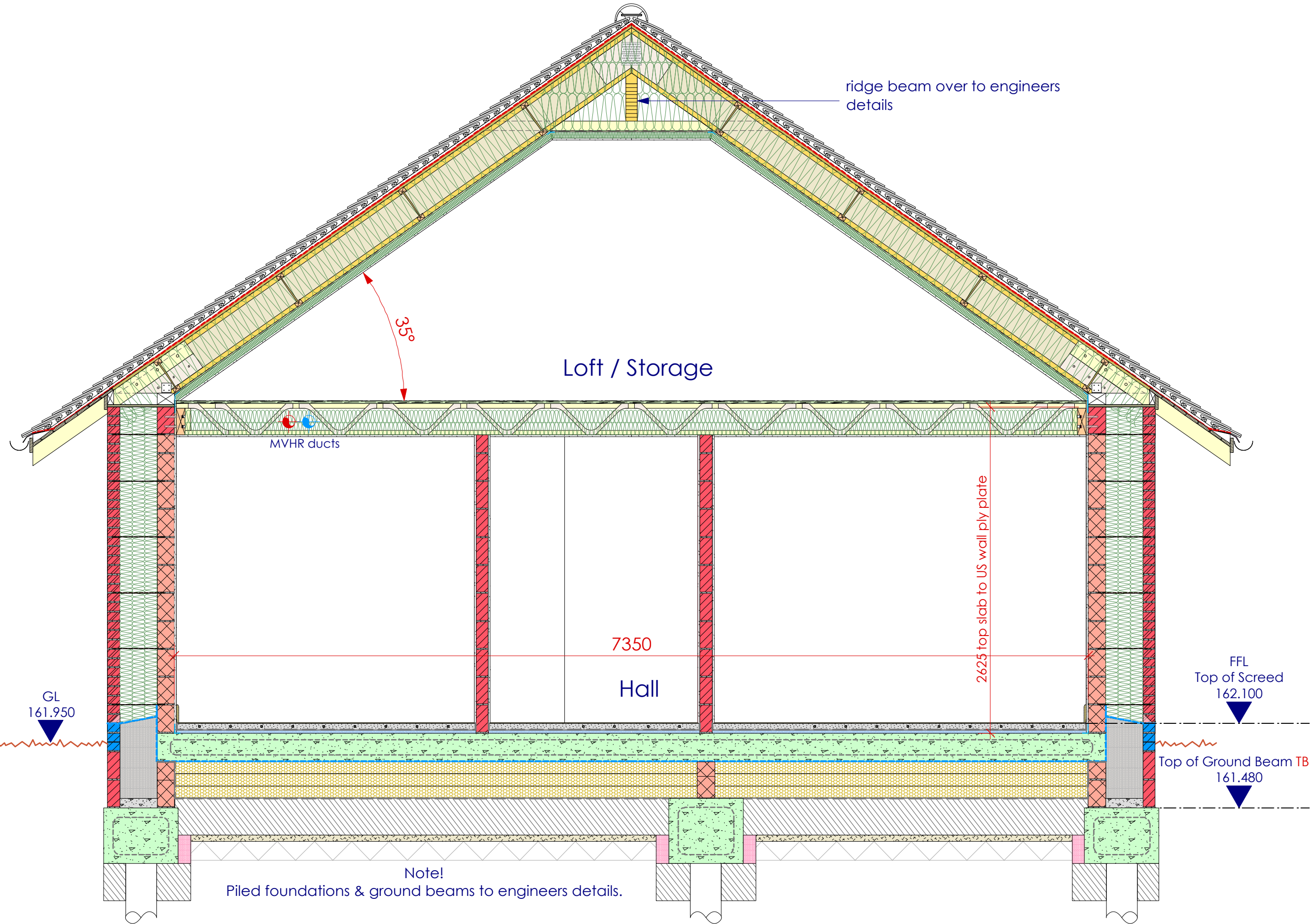
Ground Floor Plan

Work Stage E/F
Building Regulations Drawing

Ground Floor Plan

Copyright to be retained by Eco Arc.

Monastery Nursing Kuti at Amaravati Buddhist Monastery for Amaravati Developments Ltd



Typical Cross Section

Work Stage E/F
Building Regulations Drawing

ecoarc
ecological architecture practice
RIBA Chartered Architects

Eco Arc, High Fold, Kentmere Kendal Cumbria LA8 9JP
Tel: 01539 822822 Fax: 05603 111051
E: ecoarc@ecoarc.co.uk W: www.ecoarc.co.uk

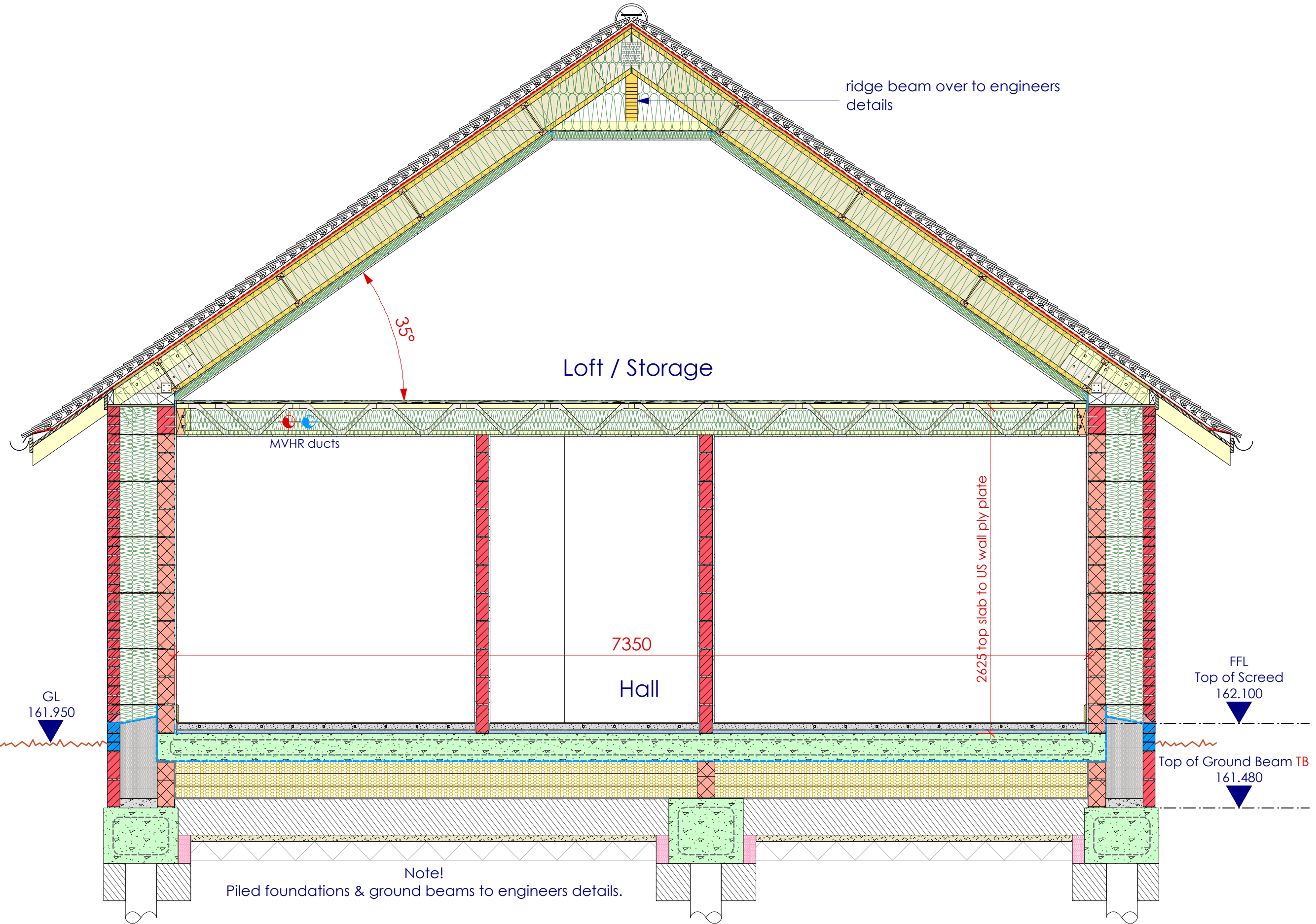
DATE 23rd June 2015
SCALE 1:30 @ A3 & 1:15 @ A1
DRW No A08 WORK STAGE E/F

Do not scale off drawings, use dimensioned measurements or contact the architect.

PROJECT
Monastery Nursing Kuti
Amaravati Buddhist Monastery
Great Gaddesden
Amaravati Developments Ltd
(Original Design by Bridget Sheppard Architect)

AS PROPOSED DRAWING
Typical Cross Section

Monastery Nursing Kuti at Amaravati Buddhist Monastery for Amaravati Developments Ltd



ecoarc
 ecological architecture practice
 RIBA Chartered Architects

Eco Arc, High Fold, Kentmere Kendal Cumbria LA8 9JP
 Tel: 01539 822822 Fax: 05603 111051
 E: ecoarc@ecoarc.co.uk W: www.ecoarc.co.uk

DATE 23rd June 2015
 SCALE 1:30 @ A3 & 1:15 @ A1
 DRW No A08 WORK STAGE E/F

Do not scale off drawings, use dimensioned measurements or contact the architect.

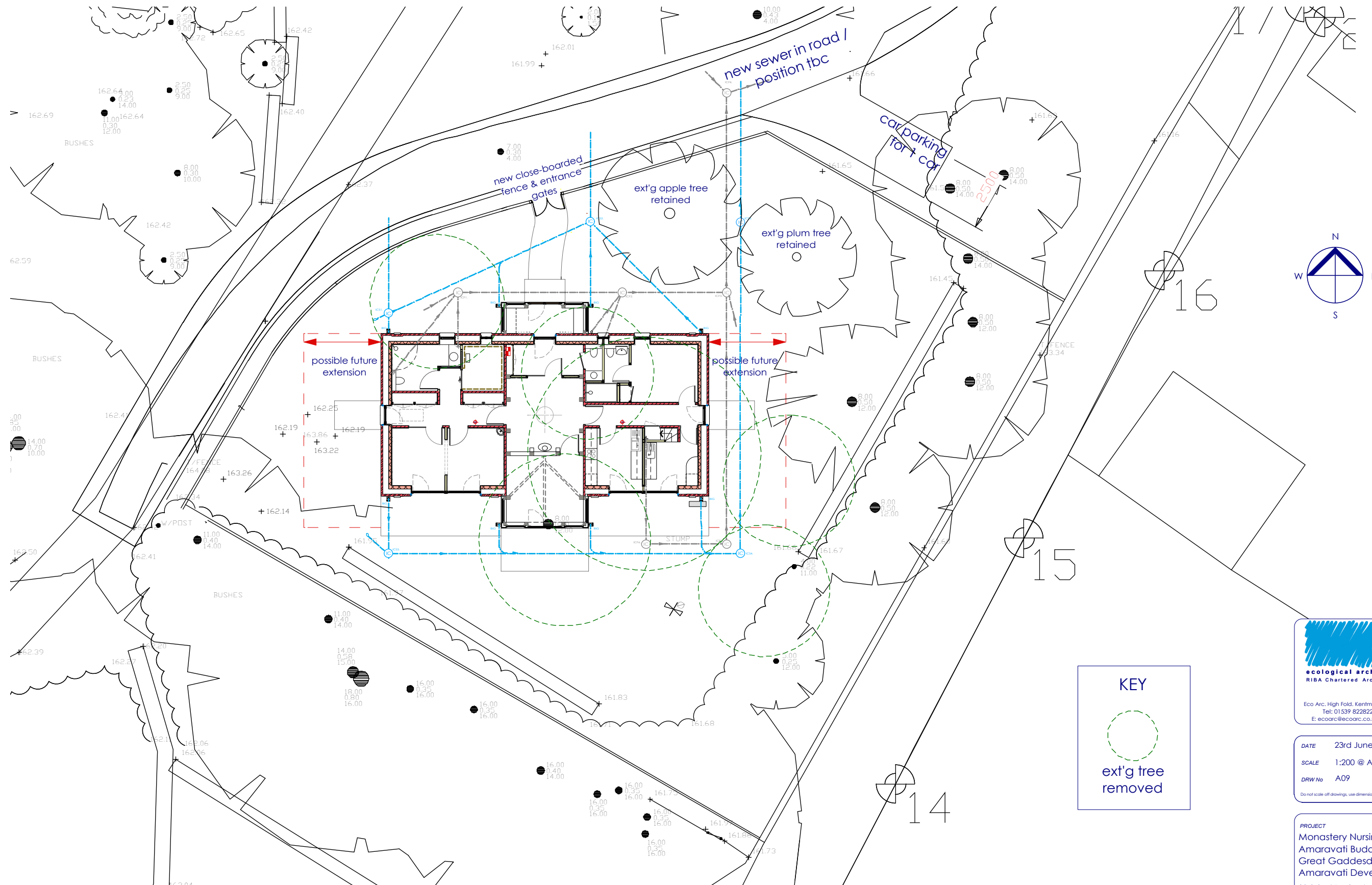
PROJECT
 Monastery Nursing Kuti
 Amaravati Buddhist Monastery
 Great Gaddesden
 Amaravati Developments Ltd
 (Original Design by Bridget Sheppard Architect)

AS PROPOSED DRAWING
 Typical Cross Section

Typical Cross Section

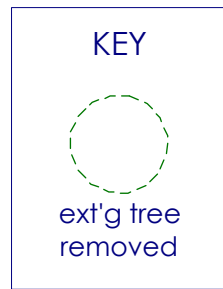
Work Stage E/F
 Building Regulations Drawing

Monastery Nursing Kuti at Amaravati Buddhist Monastery for Amaravati Developments Ltd



Site Plan

Work Stage E/F
Building Regulations Drawing



ecoarc
ecological architecture practice
RIBA Chartered Architects

Eco Arc, High Fold, Kentmere Kendal Cumbria LA8 9JP
Tel: 01539 822822 Fax: 05603 111051
E: ecoarc@ecoarc.co.uk W: www.ecoarc.co.uk

DATE 23rd June 2015
SCALE 1:200 @ A3 & 1:100 @ A1
DRW No A09 WORK STAGE E/F

Do not scale off drawings, use dimensioned measurements or contact the architect.

PROJECT
Monastery Nursing Kuti
Amaravati Buddhist Monastery
Great Gaddesden
Amaravati Developments Ltd
(Original Design by Bridget Sheppard Architect)

AS PROPOSED DRAWING
Site Plan

Copyright to be retained by Eco Arc.